

CALF REARING 2.0 FOR SMART GROWTH



40FIT
TECHNOLOGY



MORE MILK SOONER ...

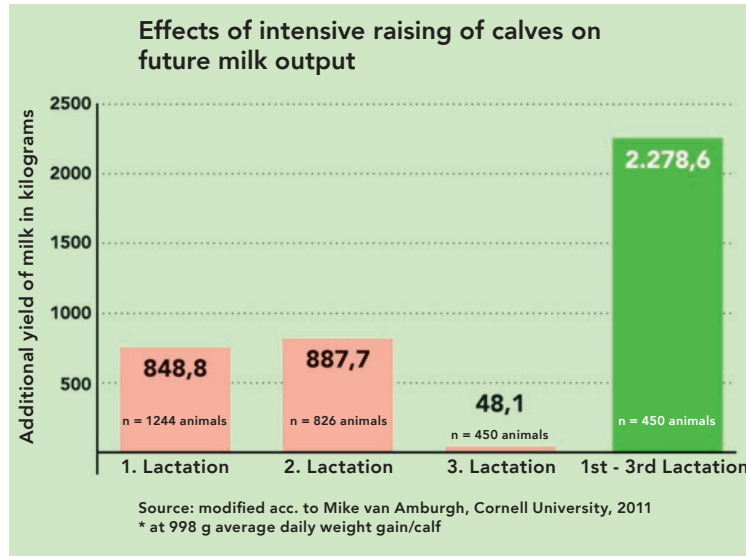


... MORE MILK LATER

Needs-based from the very start

Needs-based calf feeding in the first weeks after birth has a positive effect on vitality, fertility, output and lifespan of the animal as a grown cow. Up to the fortieth day of the calf's life, the foundations are laid to ensure that the genetic potential can be fully exploited. As a specialist in calf feeding, Förster-Technik offers you 40FIT Technology: innovative products and concepts that optimally support the growth of your calves at this crucial stage and can also be used in existing calf feeders. This creates the perfect conditions for healthy, high-yielding, long-living cows and more efficient dairy farming.

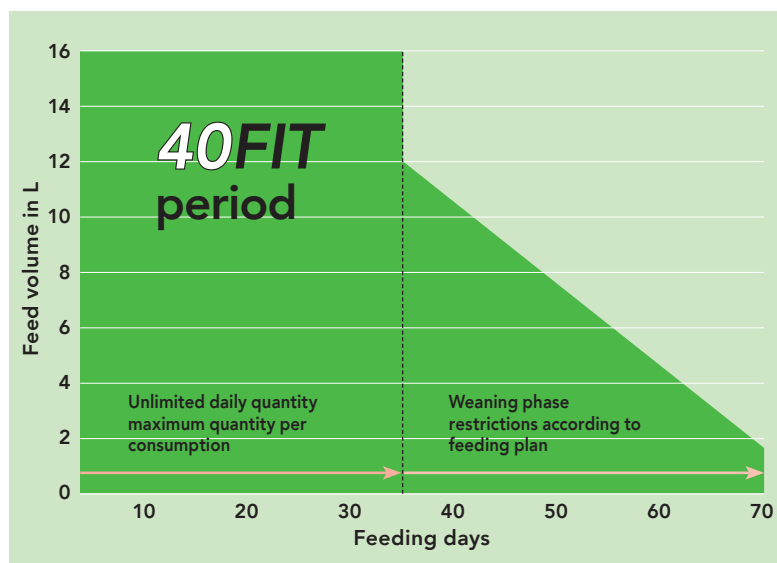
With an automatic feeder, you can supply up to four different groups, depending on the model. This allows you to feed your cow calves differently than your bull calves. Each group has its own feeding plan with individually adjustable feed quantities and feed days, as well as plans for variable concentrations of MP and milk ratios.



The 40FIT Plan

The 40FIT feeding plan, which is the default plan in the automatic feeder software, consists of a phase of controlled ad libitum feeding and a weaning phase. The first period corresponds to the first 35 days and allows calves unlimited feed consumption, distributed throughout the day. Portion size control and blocked times between meal times protect the animals from over-eating. This ensures that growth potential is maximized during the crucial first

weeks of life. Weaning is then accomplished over 35 days by reducing the amount of feed from 12 to 2 liters per day. This prevents growth reductions and promotes rumen development. The developmental advantages manifest for the animal's entire life, forming the basis of improved vitality and enhanced milk yield.



AUTOMATICALLY BETTER: THAT'S HOW IT WORKS.



Animal-specific feeding

The automatic feeder knows the daily portion for each one of your calves and gives them everything they need. Up to 12 feeding times can be distributed at equal intervals throughout the day. This is the optimal way to meet the nutritional and physiological needs of your calves.

Save money, gain time

No unnecessary residual quantities are produced because feed is only dispensed when needed. Thanks to low power consumption and the minimal need for cleaning agents, a Förster-Technik automatic feeder is not only gentle on the environment, it's also easy on

your bank account. It means that you are no longer bound by rigid feeding times and can integrate animal control individually into

your daily routine. It also eliminates the physically demanding task of carrying countless buckets of milk.

Bucket feeding



48,000 kg milk = 48 t milk

Automatic feeder

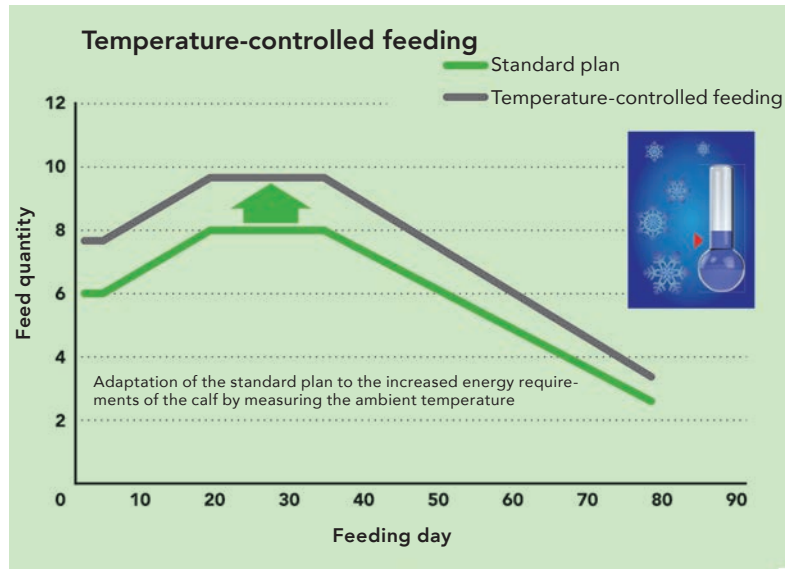


6,400 kg MP = 6.4 t MP

42 tons are eliminated

Temperature-controlled feeding

During low winter temperatures your calves need a lot more energy to keep their thermoregulation and immune systems up. Temperature-controlled feeding ensures that these increased demands are met. A temperature sensor installed by Förster-Technik in the MultiReader antenna measures the ambient temperature. If below a defined threshold, the calf automatically receives either a higher amount or a higher concentration of feed. This can be set individually on the calf feeder.



Convenient hand terminal.

The automatic feeders from Förster-Technik come standard with the easy-to-use hand terminal. This means you hold the controls in your hand and can keep an eye on your calves at the same time. It features an easy-to-read, illuminated, large format display with 15 keys. You can use the quick function keys to access the desired animal control function. You enter feeding plans and animal numbers directly using the numerical keypad. Program updates and data backups are easy to perform using an SD card and the CalfCloud.



MODERN CALF MANAGEMENT WITH VARIO smart & COMPACT smart

COMPACT smart

The **COMPACT smart** automatic feeder makes it easy to get started with professional calf feeding. The **COMPACT smart** takes charge of preparing and administering feed for up to 50 animals, which makes it ideal for small farms.

VARIO smart

The top-of-the-line **VARIO smart** automatic feeder is equipped with high-performance components and can reliably feed up to 120 animals simultaneously at 4 feeding stations. **VARIO smart** is best suited for dairy cow farms and farms with cows aged six months to one year, with the highest standards for calf raising.



Additional equipment

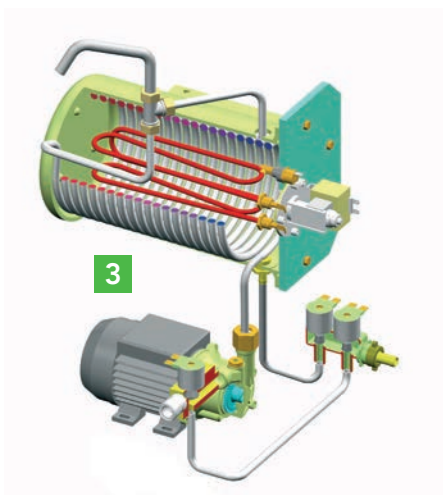
- Fly screen
- Stainless steel version

How the automatic feeder works

The functional principle of Förster-Technik automatic feeders is based on sound engineering and carefully produced components.

When a calf that is entitled to feed enters the feeding box, the automatic feeder calculates the portion it is entitled to. In a matter of seconds, the appropriate amount of feed is prepared at the precise temperature in portions between 0.25 and 0.5 liters. To do this, water, milk substitutes and other feed components are quickly and gently mixed in the intensive mixer **1**. The calf can begin to feed right away through a suction hose **2** and teat. With Combi automatic feeders, the fresh milk is warmed up by a heat exchanger **3**. Milk powder and water may also be added in the mixer. This means your calves always receive their portion fresh and at the ideal concentration.

As you walk by you can easily see whether enough milk powder remains in the feeder by looking through the powder container **4**.



- 1** Intensive mixer
- 2** Suction hose
- 3** Heat exchanger
- 4** Powder container

ACCESSORIES FOR THE HIGHEST STANDARDS

CalfApp & CalfCloud

The latest technology allows you to dispense with your routine work and fixed times for animal care. Förster-Technik is committed to providing functionality through apps and the Internet, to access information anywhere and at any time. You have access to all the key data on your smartphone, wherever you go. No arduous learning process is required to start accessing and operating the automatic equipment. To learn more, visit: www.calf-cloud.com



Download Calf-App for IOS and Android here.



VARIO

SynchroFeed - 4 at a time

Thanks to SynchroFeed, feed can be dispensed to up to 4 feeding stations simultaneously. This allows you to feed up to 120 calves using one automatic feeder. The SynchroFeed module is also available for one feeding station.



KalbManagerWIN – for a clear overview of animal data at all times

The PC program KalbManagerWIN allows you to conveniently take full advantage of animal control using tables and graphs, right from your desk, and access an overview of the entire raising period with the click of the mouse. KalbManagerWIN gives you constant access to the current data from the pen. At the same time KalbManagerWIN allows you to network multiple automatic feeders with one another.



Advantages of SynchroFeed

- Significant time savings thanks to simultaneous feeding
- Saves approximately 3 hours of work when 60 calves are fed using an in/out method at 2 feeding boxes.
- The automatic feeder can grow along with the farming operation



Supplying feed to the CalfRail & groups using only one automatic feeder

VARIO

CalfRail 2.0

With the proven CalfRail, individually-penned calves can be automatically fed animal by animal, in small, freshly prepared servings up to eight times a day.

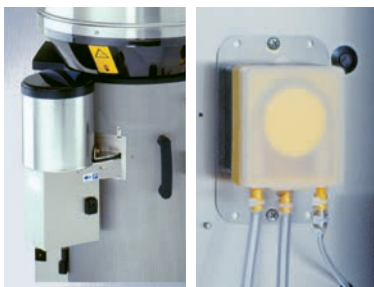
CalfRail is controlled by, and supplied with feed in the form of milk replacer or milk, from the VARIO automatic feeder. This saves farmers the work of preparing, transporting and administering feed, as well as that of manual cleaning of buckets and equipment. Animal monitoring and care no longer need occur at fixed intervals. The automatic feeder delivers key data required for optimum calf management – such as feed consumption and drinking speed – at the push of a button. The data for individually-penned animals is naturally included in group penning and can be accessed via smartphone or tablet using the CalfApp or via PC using KalbManager.





Automatic calibration system

Fluctuating bulk weight of milk substitutes can lead to changes in the concentration. In the worst case milk replacer deficits lead to poor weight gain or diarrhea while excess milk replacer consumption leads to unnecessarily high feed costs. The patented calibration scale beneath the mixing container automatically checks the dosage weights of all feed components during feeding and adjusts it if necessary.



Liquid Dosing unit for powder supplements

With the supplementary powder dosing unit, highly concentrated supplements are administered in precise gradations by the gram. The powder container has a large capacity (up to 4 kg). This is especially convenient for supplements dosed in larger quantities, e.g., electrolytes and dietary supplements. The liquid dosing unit allows for precise and reliable dosing of liquid additives.



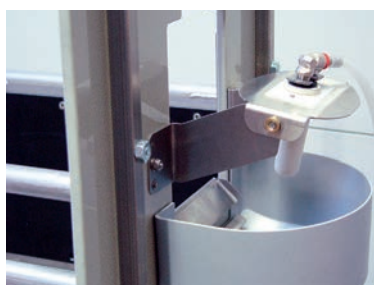
Flex 100 raceway

This highly stable raceway endures even the roughest conditions in the pen. The open design gives calves a wide-perspective view. This significantly reduces stress associated with accessing the feeding station. The various antenna installation options (left, right or front) further augment the flexibility of the raceway.



MultiReader identification

MultiReader identification is designed for the high-traffic areas in the calf pen. The feeding pump can be started immediately by means of buttons integrated into the antenna housing. The additional integrated LED provides information at a glance about feed entitlement and identification status. This is especially important and convenient if the automatic feeder display is not visible from the calf area.



Teat cleaning

The teat cleaning functionality is an add-on for calves in group penning. By means of a pump and two nozzles, the teat is rinsed and cleaned from outside after feeding using water or cleaning additives. The cleaning process runs automatically after each feeding process. The start times and cleaning duration can be set using a control unit.



CalfProtect

CalfProtect is a feeding station add-on that can be easily retrofitted onto existing systems and which allows calves to rest for a certain time after feed intake. Once a calf that is entitled to feed enters the station, the mesh gate automatically closes by means of a pneumatic cylinder. This protects calves from suckling their pen companions.



Fresh milk container with mixer
 The stainless fresh milk container has a capacity of 120 or 200 liters. The fully automatic mixer has an interval control function. The deep outlet ensures full drainage and easy cleaning. A built-in ball valves makes operation easier.



Concentrate feeder
 Feeding a high-quality concentrate is recommended as early as possible. At the concentrate feeder, the calves receive concentrate that is fresh and adjusted individually to them. The amount consumed is registered in the automatic feeder and can also be displayed there. Once concentrate consumption reaches a certain threshold, e.g. 1 kg per day, at which time the feed quantity is automatically reduced. The unit holds up to 70 kg concentrate and keeps it fresh longer.



Electronic animal scale
 With the electronic half-body scales in the feeding station, you can easily track and monitor each individual calf's weight as they grow. Based on weight development, every animal can be apportioned feed individually; including consumption of concentrate and TMR. This enables weaning based on the level of development. The result is more homogeneous herds in young cattle raising and milk production.

Technical data

	COMPACT smart	VARIO smart
Power tank capacity	approx. 35 kg	approx. 35 kg
Heat output	2,5 kW (400 W)	5,0 kW (400 W)
Power supply *	230V/400V/3/N/PE / 50 Hz / 16 A	230V/400V/3/N/PE / 50 Hz / 16 A
Feed preparation	up to 1.5 l/min	up to 2.5 l/min
Feeding stations	up to 2	up to 4
Number of calves being raised	20 to 30 per feeding station, up to 50 calves at a time (up to 100 calves/year)	20 to 30 per feeding station (maximum of 120 animals)

* Further power supplies are available.

Automatic feeder types: Milk powder automatic feeder, Fresh milk automatic feeder, Combi automatic feeder

Standard equipment

- Hand terminal with 8-line large format display and SD card slot
- Feeding pump for easy training of calves; can be operated from the feeding station
- Powder circulation pump in the heat exchanger with separate heating circuits (for Combi and Fresh milk automatic feeders)
- IQ heating regulation
- Stainless steel pump (for Combi and Fresh milk automatic feeders)
- Shutoff valve for feeding station
- Milk pump (for Combi and Fresh milk automatic feeders)
- Ethernet connection for Internet connection
- Mixer drain valve
- Fully automatic heat exchanger cleaning (for Combi and Fresh milk automatic feeders)

VARIO

- Automatic water flow meter

Accessories for automatic calf feeders

- Automatic calibration system
- Precision doser for powdered additives
- Dosing pump for liquid additives
- Dosing pump for cleaning agent (for powder model)
- Fly screen door
- Thermal vapor barriers
- CalfProtect to protect calves from cross-sucking
- 2nd feeding station extension
- Fresh milk container with mixer
- Frost protection equipment
- Additional heater for suction hose
- MP level sensor
- For lower-lying feeding stations
- "KalbManagerWIN" PC program
- CalfApp / Cloud
- WiFi module
- Animal scales

VARIO

- CalfRail
- Pneumatic teat slider
- Pulsating compressed air cleaning
- Powder hopper attachment for 50 kg capacity
- SynchroFeed

Förster-Technik GmbH

Gerwigstr. 25
 D-78234 Engen, Germany
 Tel.: +49 (0) 7733 9406-0
 Fax: +49 (0) 7733 9406-99
 E-mail: info@foerster-technik.de
 Internet: www.foerster-technik.de

Technical changes reserved (as of 11/16).
 48424 Automatic feeders brochure English



**FÖRSTER
 TECHNIK®**
Automatisch besser.