

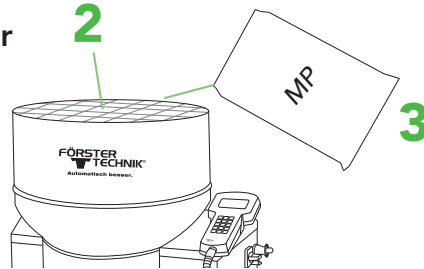
QUICK START GUIDE

Automatic calf feeder - Powder

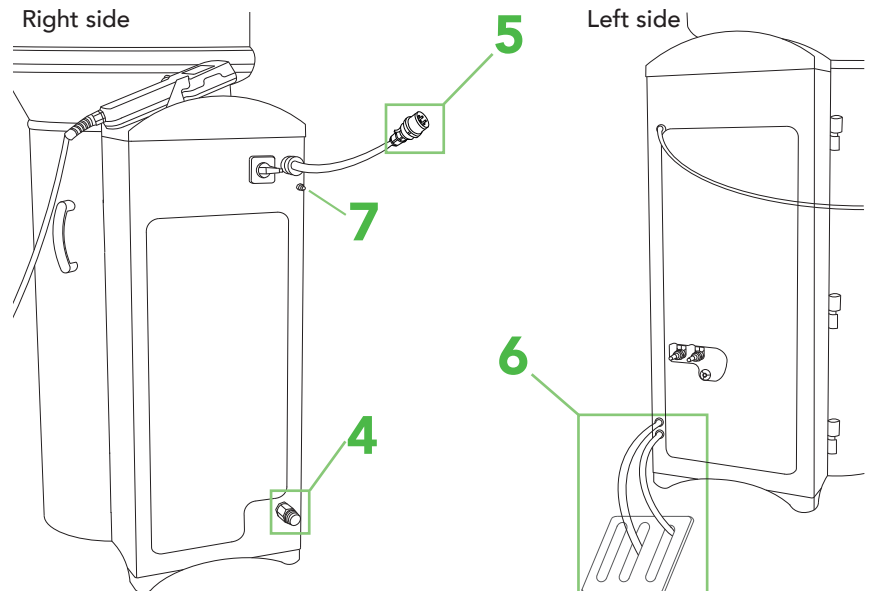
1.12 Recommissioning

This document gives a brief overview of the most important steps when recommissioning a feeder.

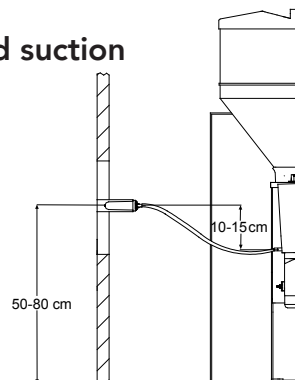
- 1 Remove the protective cover**
Place the feeder in the desired position and clean the outside with a damp cloth.
- 2 Mounting the protective grid/cover of the powder hopper**
- 3 Fill up milk replacer**



- 4 Connect water**
Use a new hose!
- 5 Connect power**
- 6 Provide draining options**
 - On the left side of the feeder
 - In front of the feeder in the middle of the housing
 - At every feeding station
- 7 Establish potential equalisation**



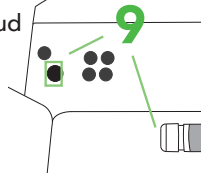
- 8 Attach new teats and suction hoses**



- 9 Connect Ethernet cable and, if necessary, identification cable**

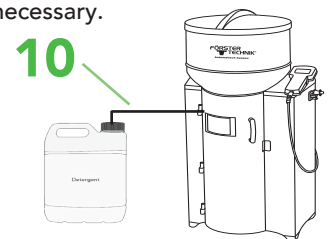
Remove dummy plug / sealing cap
Open door on the left side and plug in Ethernet cable

TIPP: check QuickStartGuide 2.3 CalfCloud

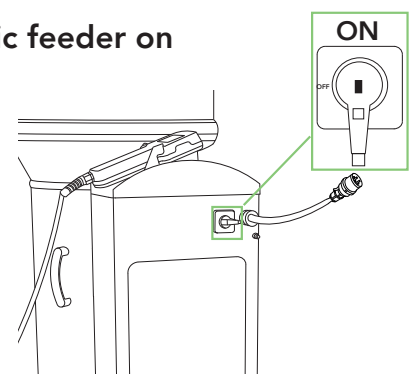


- 10 Install external detergent supply**

Check storage level and re-fill if necessary.



- 11 Turn the automatic feeder on**



Enter

→

