



QUICK START GUIDE

Automatic calf feeder - combi

1.12 Recommissioning

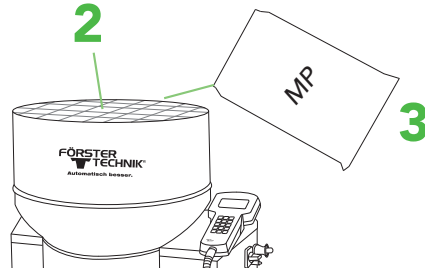
This document gives a brief overview of the most important steps when recommissioning a feeder.

1 Remove the protective cover

Place the feeder in the desired position and clean the outside with a damp cloth.

2 Mounting the protective grid/cover of the powder hopper attachment

3 Fill up MP



4 Connect water

Use a new hose!

5 Connect power

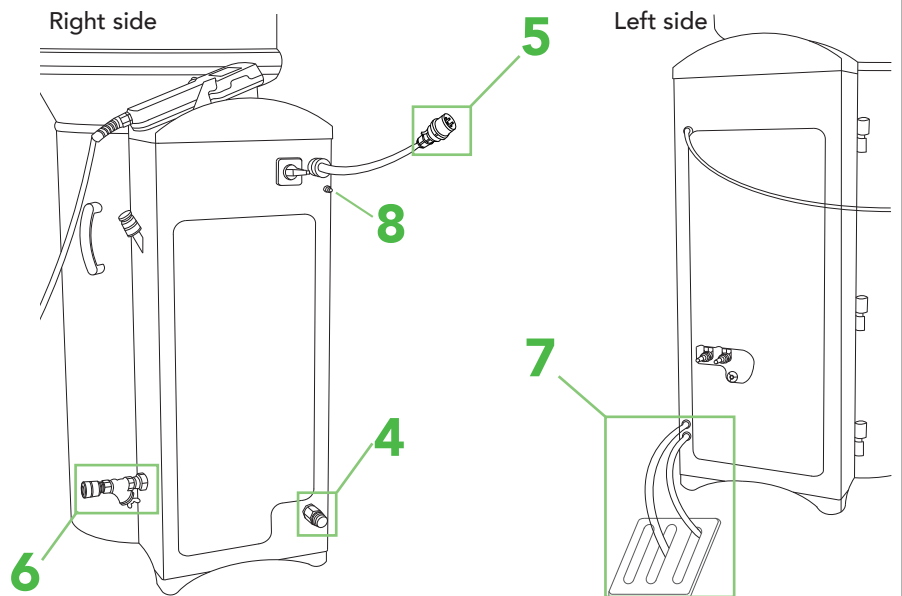
6 Connect milk tank

Place milk tank next to the feeder on same or on higher level.
Use a new hose!

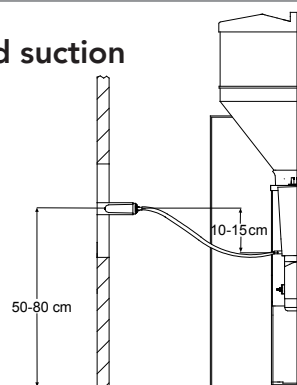
7 Provide draining options

- On the left side of the feeder
- In front of the feeder in the middle of the housing
- At every feeding station

8 Establish potential equalisation



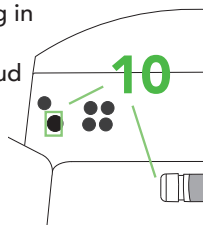
9 Attach new teats and suction hoses



10 Connect Ethernet cable and, if necessary, antenna cable

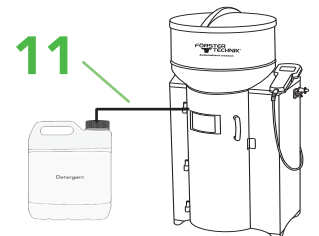
Remove dummy plug / sealing cap
Open door on the left side and plug in Ethernet cable

TIPP: check QuickStartGuide 2.3 CalfCloud

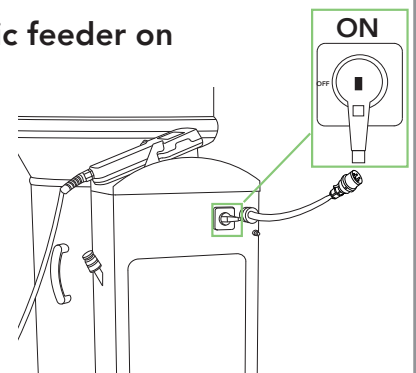


11 Install external detergent supply

Check storage level and re-fill if necessary.



12 Turn the automatic feeder on



QUICK START GUIDE

Automatic Calf Feeder - 1.12 Recommissioning

First settings at the Handheld

13 Enter basic settings (date & time)

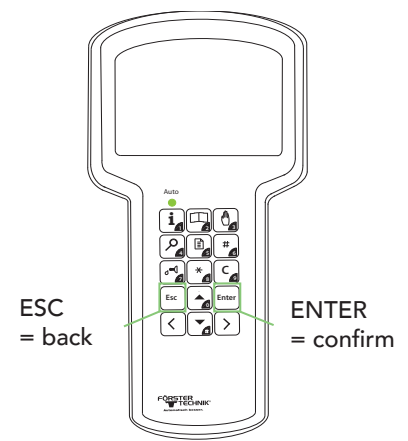
14 Fill the heat exchanger

Fault message HE not filled is automatically displayed

press



HE is filled now



15 Calibration

TIPP: check QuickStartGuide 1.3 & 1.4 Calibration

Calibrate all existing components at least 3 times during initial commissioning.

Water, MP, milk, additives, detergent



▶ calibration



▶ Components

16 Cleaning before recommissioning

TIPP: check QuickStartGuide 1.6 & 1.7 Cleaning

Check cleaning settings



▶ Cleaning



▶ settings

Attention: detergent quantity is set to 0ml by default

Start circuit cleaning



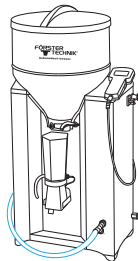
▶ Cleaning



▶ circuit cleaning



▶ start?



After cleaning, check all components again for leaks.