

BECAUSE EACH CALF COUNTS

FÖRSTER
TECHNIK®



PRODUCT PROGRAM



RECONCILING ECONOMY, ECOLOGY AND ANIMAL WELFARE.

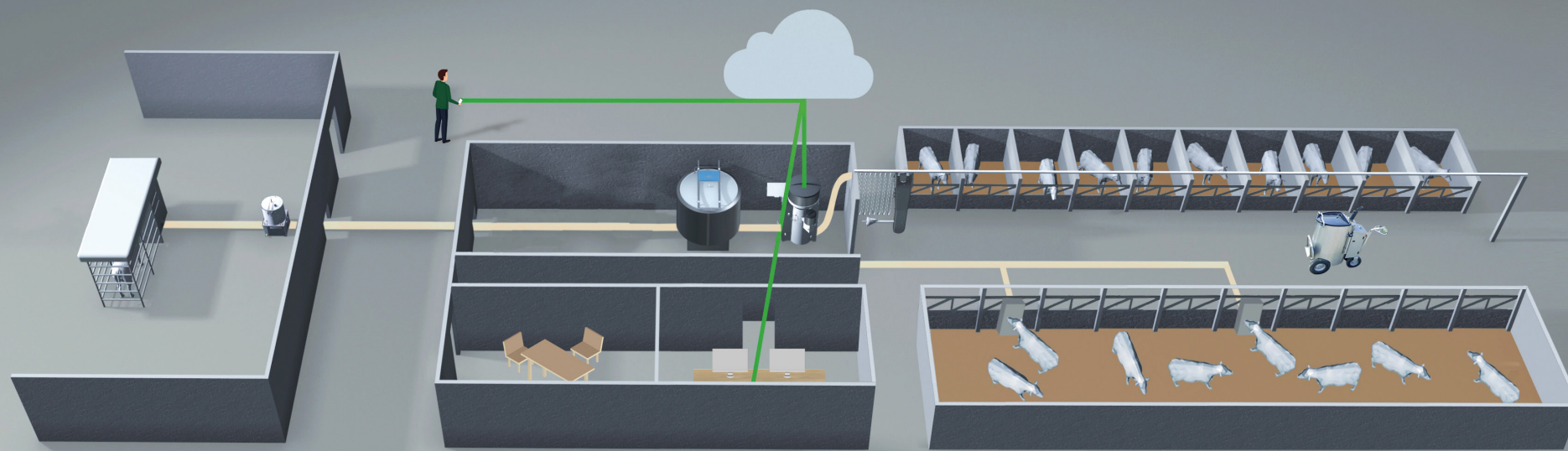
Just as children are the future of a society, calves are the future of dairy farms. The milk yield of cows is shaped by feeding when calves are young. This has been scientifically proven. For the future, society demands sustainability in all dimensions. More than ever, economics for dairy farms, ecology and animal welfare must be reconciled. This is our common task. Föörster-Technik has recognized that for a successful and accepted agriculture each calf counts. With a modern and practical product range, Föörster-Technik supports calf farmers worldwide to meet these challenges.





INCREASING EFFICIENCY IN THE CALF BARN.

Healthy calf growth is the focus of all considerations at Förster-Technik. From birth to single housing, pair housing, group housing and high-performance cows, Förster-Technik accompanies dairy farms with scientifically based feeding concepts, the most innovative feeding technology and precise health monitoring, which can be configured individually for all farm sizes and types of housing.



Health monitoring _____ 6

Colostrum management _____ 8

CalfRail / CalfRail DUO _____ 10

MilchMobil _____ 12

Clean & Fill Station _____ 14

Automatic calf feeders _____ 16

CalfCloud / CalfApp GO! _____ 18

CalfGPT _____ 19

Automatic calf feeders
Accessories _____ 20

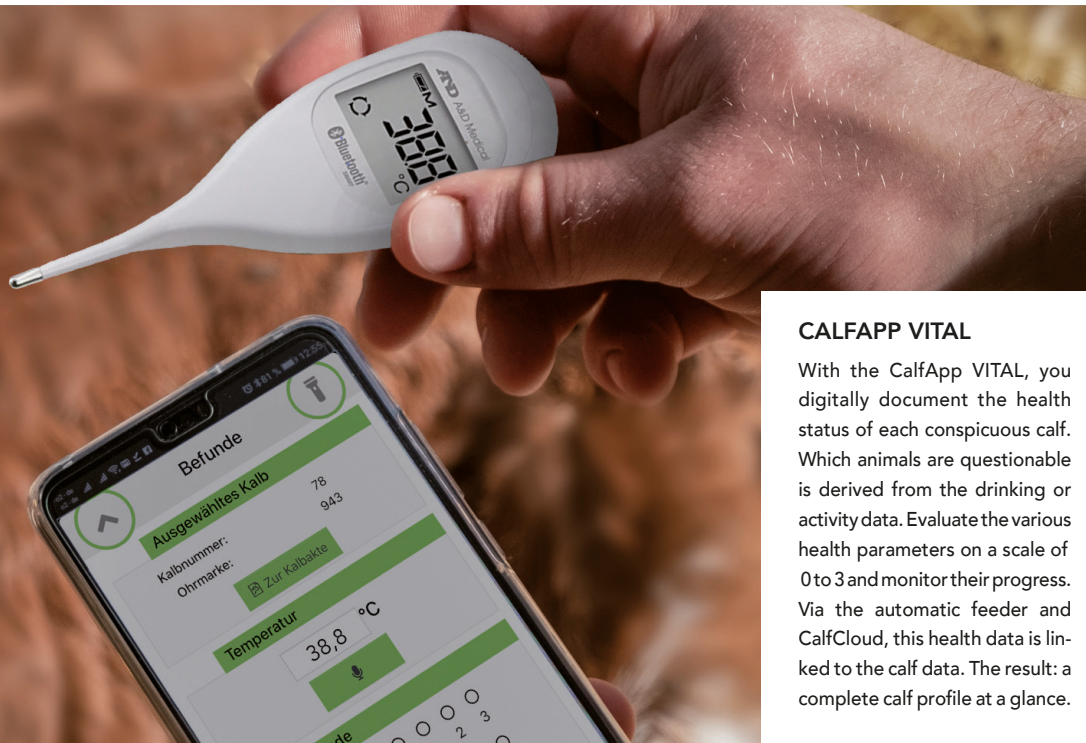
Automatic
Milk Management _____ 22

HEALTH MONITORING

FOCUSING ON CALF HEALTH FROM BIRTH.

Calves are very sensitive in the first weeks of life, so their health is a major challenge on many farms. Förster-Technik offers proven systems for colostrum administration and then automatic feeding to give calves the necessary foundations for healthy growth. From the data provided by the automatic feeding systems, noticeable patterns can be immediately identified to provide hints to health problems. This is supplemented by comprehensive 24/7 activity monitoring with the Smart Neckband, or completely taken over if no feeding technology is used yet. Thus, with Förster-Technik technology, every calf is in good hands.

More infos



CALFAPP VITAL

With the CalfApp VITAL, you digitally document the health status of each conspicuous calf. Which animals are questionable is derived from the drinking or activity data. Evaluate the various health parameters on a scale of 0 to 3 and monitor their progress. Via the automatic feeder and CalfCloud, this health data is linked to the calf data. The result: a complete calf profile at a glance.





Video

SMART NECKBAND

The unique Smart Neckband combines health monitoring via activity measurement with direct indication of problems via the LED. Thus, your animals are always in focus 24/7, even without a feeder. Warnings are simply transmitted and displayed by flashing. And, should animals be searched for, this is no longer a problem even in large herds with the two-color LED: The Smart Neckband shows you the way.

COLOSTRUM MANAGEMENT



COLOSTROMAT /-MAX

Depending on the model, two or four ColoStroBAGs can be rotated in a water bath and pasteurized quickly and gently at 60°C for 60 minutes. This effectively reduces bacteria, but the important antibodies are retained. After storage, even deep-frozen ColoStroBAGs can be quickly and easily brought back to drinking temperature thanks to the strong heating power.

COLOSTROFIT. HEALTHY CALVES FROM THE VERY FIRST HOUR.

Calves are born without antibodies in their blood and are defenceless against the germ load of their environment. Only the colostrum of the dams provides the calves with the vital antibodies. Promptly, in sufficient quantity and good quality – these are the golden rules of the colostrum supply necessary for every calf. For this purpose, Förster-Technik has developed the simple and comprehensive ColoStroFIT system – with hygienic colostrum bags, pasteurization and storage, and finally rapid heating and easy administration to all newborn calves.

More info



COLOSTROBAG

The sturdy ColoStroBAG is ideal as a disposable bag for hygienic filling, pasteurizing, freezing, storing and administering colostrum. With 3.8 liters, it holds just the right amount of colostrum for your newborn calf. A teat or flexible drench tube can be screwed directly onto the ColoStroBAG.

COMFORT CADDY

With the handy Comfort Caddy, you can carry the ColostrumBAG like a backpack. The practical carrying aid with back strap ensures that you have both hands free when caring for your new arrival.



CALFRAIL / CALFRAIL DUO

MORE FEEDING. ALSO IN INDIVIDUAL AND DOUBLE PENS.

Vital calves need to be fed 4-5 times a day during the first weeks of life in order to produce maximum milk yield later on. This is inefficient in individual housing with previous feeding methods and far too labor-intensive. With the CalfRail and CalfRail DUO, there is an automatic solution for all farms – following nature's example for the welfare of the animals.

Video



MANAGED BY THE VARIO FEEDER

The CalfRail is supplied with milk from the VARIO feeder, even in combination with group stations. Thus, all functions such as fresh milk feeding and all modern management options are also available for the CalfRail.



THE CALFRAIL CONCEPT

On a rail mounted above the boxes, the feeder arm moves from box to box. An insulated and heated hose package is connected to the automatic feeder. Depending on the CalfRail model, up to 64 calves per unit can be fed fully automatically multiple times a day via the vacuum-controlled hose pump, with optional teat cleaning. The feeder arm swings freely to simulate a natural drinking situation.



CALFRAIL DUO: IT TASTES BETTER IN PAIRS.

Calves develop even better when they are not alone in a box, but are in a double box with another calf. This is confirmed by numerous studies and practical farms. With the CalfRail DUO, two calves in a double box can now be fed automatically via two teats at the same time. Because it tastes better in pairs!

MILCHMOBIL

MILCHMOBIL. MORE OF EVERYTHING.

The milk trolleys make calf feeding easy. Following the launch of the generation MilchMobil NEXT with a round tank and several unique functions such as cooling small quantities of milk in 2022, Förster-Technik is now going one step further in terms of operation. The MilchMobil PRO sets new standards in ergonomics and enables additional functions such as automatic fill level detection or the LED color display with light-up keyboard. This means you can now feed your animals even more conveniently, individually, hygienically and quickly.

Video



CAN BE CONFIGURED TO FIT EVERY FARMS

Tank sizes of 120 l, 200 l and 300 l are available in a pushed or pulled design, depending on the model. With AMS-Cool or even pasteurizing option - the MilchMobil can be individually configured to suit every comfort demand and every farm size.

NEW: COLOR DISPLAY

The PRO version features a high-resolution 4.3" color display with a light-up keyboard that displays information more intuitively. Clear, colorful symbols like on a smartphone make operation easy, while the new screen size makes it easy to see the values.





PREPARATION EVEN FASTER

Milk powder is dissolved in no time with the fast-running mixer. Due to the strong battery, even remixing is possible with the calves. This is unique in the world, as is the most powerful heating for heating milk and water or for optional pasteurization with 8kW. This power is possible due to the proven water bath heating: Fastest heating without burning.



AMS-COOL

The water bath heating is the basis for the innovative optional AMS cooling system, where even individual milkings of cows from milking robots can be effectively cooled with well or ice water. The high quality of fresh milk can thus be maintained until feeding time, even on warm days.



NEW: CALFPLAN

For the first time, CalfPlan enables age-dependent, animal-specific feeding without further aids such as RFID transponders and antennas. The calf pens are simply numbered consecutively. After each dosing out, the next calf pen in which a calf is registered is automatically selected. Pens without calves are known to the system and are skipped.



4-WHEEL CHASSIS

All MilchMobil models are extremely maneuverable and off-road with powerful electric motor in two speeds. They are equipped with 4 wheels for safe maneuvering. Optionally also available as puncture-proof version with a foamed core.



LOCKABLE SWIVEL ARM

A lockable swivel arm enables fast dispensing as the machine passes by.

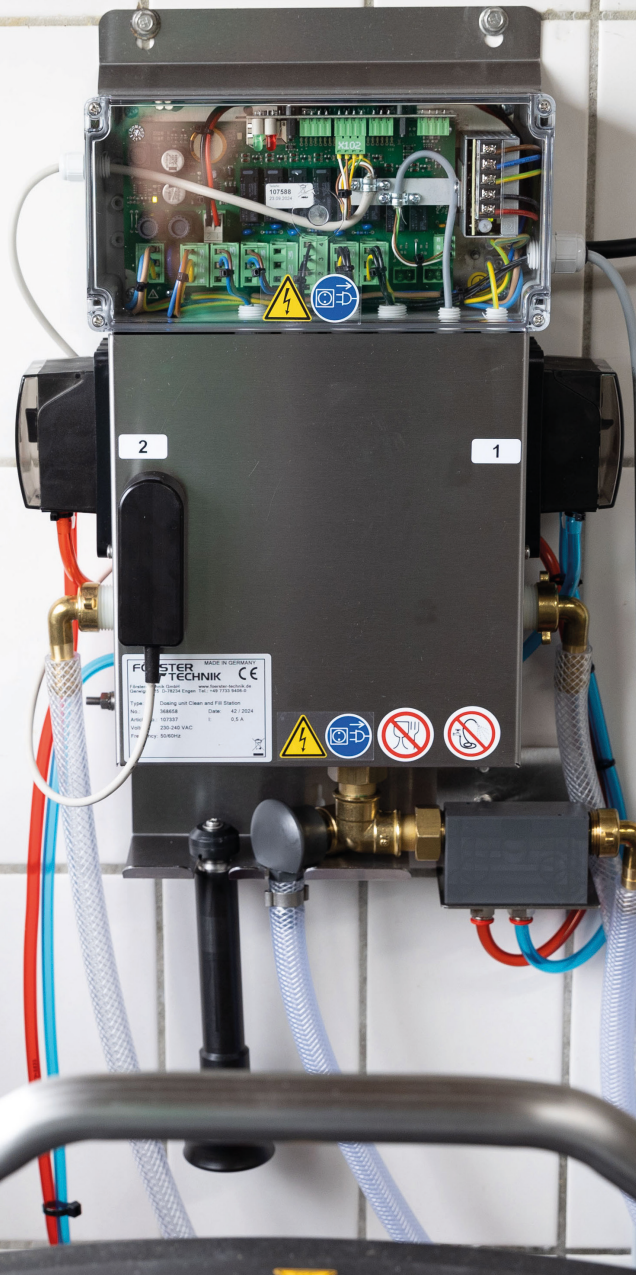


BUCKET HOLDER

A bucket holder extends the equipment options of the MilchMobil models.

DOCK THE MILCHMOBIL

The MilchMobil to be cleaned is connected to the Clean & Fill Station in less than a minute. After that, everything runs automatically – with two cleaning agents, hot and cold water and highly accurate flow sensor. At the touch of a button, the MilchMobil cleans itself automatically and is ready for the next feeding.





FULLY AUTOMATIC CLEANING

Cleaning is fully automatic in several steps and corresponds to good operational practice for milk tank cleaning. An optimal cleaning result and a high standard of hygiene are ensured.



CLEAN & FILL STATION. SAVE UP TO 240 WORKING HOURS PER YEAR.



The milk trolleys make calf feeding easier. Until now, manual cleaning of all milk-carrying parts after feeding was time-consuming and tedious. So was waiting while water was being filled and heated before milk powder feeding. The Clean & Fill Station now automates these steps. Take the next step and save yourself unnecessary working time.

Video



FULLY AUTOMATIC WATER FILLING

Milk powder feed requires up to 250 liters of water per feeding. The required amount of water is automatically filled into the tank and timed so that the water is available at the correct mixing temperature for the next feeding.



AUTOMATION MODELED ON NATURE.

The automatic feeder is the center of every automatic feeding system. In group housing, it recognizes the calf and mixes freshly prepared individual portions around the clock at the optimum temperature. It reliably monitors feeding and documents the drinking behavior of the calves at the feeding stations. You decide how much your calves drink and whether they are fed fresh milk or milk replacer. Feeding adapted to biological needs allows the calves to develop their full genetic potential. At the same time, work efficiency is significantly increased through automation – only with the automatic feeder from Förster-Technik do you reconcile better animals with better efficiency.

- Healthy calves thanks to the best energy supply with the 40FIT program
- Relaxed feed intake for your calves thanks to self-determined feeding times
- Documentation of feed intake with early detection of diseases
- Models for milk replacer, fresh milk only or combined milk replacer and fresh milk
- Fully automatic cleaning
- Many useful options available
- Tens of thousands of proven components
- Powerful and reliable
- Optional TOUCH Display or Handheld for easy operation
- Internet-enabled as standard – use our free CalfApp & CalfCloud!

More Info





FÖRSTER
TECHNIK®

AUTOMATIC FEEDER VARIO CONNECT

The top model for calf rearing is equipped with very powerful components to supply up to 128 calves with freshly prepared feed at the optimum temperature around the clock. A new feature is the improved control unit, which makes it even easier to connect to CalfCloud and the Förster-Technik apps. With up to four drinking stations and the new optional sensor "Smart Flow", which allows two animals to drink at the same time, the VARIO Connect is ideal for farms with the highest demands. Another new feature is the traffic light function, which displays the status of the device in color, allowing for quick checks even without a handheld terminal.

AUTOMATIC FEEDER COMPACT CONNECT

Your entry into automatic calf feeding is now even smarter: the COMPACT Connect makes feeding highly efficient, even for smaller calf herds. The improved control unit is new and makes it even easier to connect to CalfCloud and the Förster-Technik apps. The COMPACT Connect can supply 50 calves around the clock with freshly prepared feed at the optimum temperature. A new feature is the traffic light function, which displays the status of the device in color and thus enables quick control even without a handheld terminal.

INFORMATION THAT COUNTS

How many calves have already drunk the right amount? Which ones are still entitled? For which calves is the alarm in effect? Which calves are currently in the stations? Is the technology running smoothly? All menus can be seen at a glance. The answers are easily retrievable.

Feed	Calving	Calving date	Feeder	Plan	St.	Tendency	Drinking speed	Break Offs	Housing date	Feeding day	Prescriptions	Alarms
Yesterday Today	Cal No. ^						Yesterday Today	Yesterday Today				Yesterday Today
108 / 104	1	Miller	A	1		109 / 134	4 / 3	7	34			
99 / 108	2	Miller	A	1		3 / 0	8/10/2022	78				
124 / 118	3	Miller	A	1		6 / 2	9/13/2022	44				
93 / 87	4	Miller	A	2		1 / 3	9/15/2022	42				
249 / 153	5	Miller	A	1		0 / 0	8/13/2022	75				
199 / 73	6	Miller	B	1		7 / 5	10/4/2022	23				
87 / 106	10	Miller	B	1		4 / 3	10/4/2022	23				
99 / 108	2	Miller	A	1		13 / 6	9/20/2022	37				
124 / 118	3	Miller	A	1		6 / 2	9/13/2022	44				
99 / 108	2	Miller	A	1		1 / 3	9/15/2022	42				
124 / 118	3	Miller	A	1		6 / 2	9/13/2022	44				
93 / 87	4	Miller	A	2		1 / 3	9/15/2022	42				
249 / 153	5	Miller	A	1		0 / 0	8/13/2022	75				
199 / 73	6	Miller	B	1		7 / 5	10/4/2022	23				
87 / 106	10	Miller	B	1		4 / 3	10/4/2022	23				
						13 / 6	9/20/2022	37				

THE DIGITAL CALF BARN HAS LONG BEEN A REALITY.

Dairy farmers have realized that accurate calf data is essential for successful calf rearing. Förster-Technik plays a major role in this development. For fact-based decisions, the automatic feeders provide the complete herd and individual animal data. Förster-Technik offers a complete solution for the digital calf barn with uniform user interfaces for all end devices - whether handheld or TOUCH display on the automatic feeder, smartphone or browser.

DETECTING ALARM ANIMALS

Alarm animals, of course, are of particular interest. With a tap of the finger comes the alarm animal list. You can intervene specifically. Via a menu you can define further filter criteria and save them as favorites.



CHECK DRINKING BEHAVIOR

Interested in the drinking behavior of an individual calf? With one tap you are in the calf file. The whole life of the calf is represented here in simple graphics. If necessary, you can administer supplements individually.



CALFGPT. LET THE CALF DATA SPEAK FOR ITSELF.

With CalfGPT from Förster-Technik, calf management will be voice-controlled in future. You can call up data or control feeding processes using standard Bluetooth headsets. CalfGPT understands you intuitively without fixed voice commands and provides you with answers to all questions about your calves directly to your ear.

Video



INNOVATION
AWARD

EuroTier

GOLD MEDAL



„Yes! Consumption today 3.0 L. Drinking speed 90%. Visits with entitlement 1, without entitlement 1. Would you like more information about this calf?“

„Calf 39, have you been drinking today?“

CALF-CLOUD.COM – A NETWORK FULL OF ADDITIONAL FUNCTIONS.

If the automatic feeders are connected to the Internet, you can access your feeders and animals from anywhere. Interfaces to herd management programs make it easy to report births, for example. Teamwork with veterinarians becomes possible via the CalfApp VITAL. In case of an alarm, you get push messages on your smartphone. No matter where you are, you always have your calf barn under control.





1

ACCESSORIES FOR EVERY REQUIREMENT.

Herd sizes, barn architecture, feeding habits – every dairy farm pursues its own, completely individual strategy in the calf barn. All Förster-Technik feeding systems can be configured and expanded to suit the individual farm. They adapt perfectly to your requirements. The Förster-Technik consultants will be happy to help you configure your optimal system.

More Info



1

2



3



1: HYGIENEBOX FOR NATURAL DRINKING BEHAVIOR.

Feeding technology modeled on nature: The movable HygieneBox enables your calves to act out their natural udder bumping behavior, an important indicator of well-being. An activity sensor supports early disease detection and starts the training pump for young animals. Hygiene is also very important: the teat is rinsed with clear water through two nozzles after each calf. And the complete hose system can be automatically cleaned in the circuit up to four times a day, optionally with one or two rinsing agents. The unique „Yello Teat“ from Förster-Technik additionally reduces bacterial growth.

2: SYNCHROFEED – PARALLEL FEEDING EASY

Use the full performance potential of your automatic feeder: with the single or quadruple IFS (intelligent feeding stations). The SynchroFeed principle enables simultaneous feed intake with full quantity control. Feed up to 120 calves at up to four feeding stations simultaneously. In small group housing with group sizes of up to 10 calves, up to 8 groups can be fed in parallel. The peristaltic pumps also support your calves sucking at more distant stations.

3: THE CONCENTRATE FEEDER. WEANING WHEN IT SUITS.

The automatic concentrate feeder is connected to the calf management system in the automatic feeder. This allows you to conveniently control quantities and consumptions of the calves from there. Calves develop into ruminants at different rates – no problem with the concentrate feeder. Calves are weaned from milk individually – saving labor and only when the rumen is sufficiently developed.

4: CALF SCALE. AUTOMATIC WEIGHT CONTROL.

Only with facts the development of your animals can be optimized, and what could be better suited here than weight? Weigh your calves daily without extra effort! The electronic front leg scale is simply integrated into the feeder station and logs the weight during feeder intake. Track gains through the feeder all the way to the CalfCloud. Based on the weight development, each calf can also be automatically weaned.

5: SMARTFLOW SENSOR

The VARIO Connect automatic feeder is being offered for the first time with the optional „SmartFlow“ sensor which allows two animals to drink in parallel without the need for additional peripheral devices. This saves time, especially during training, while still recording all consumption - because each calf counts.

4



5



AMM. FULLY AUTOMATIC FROM UDDER TO CALF.

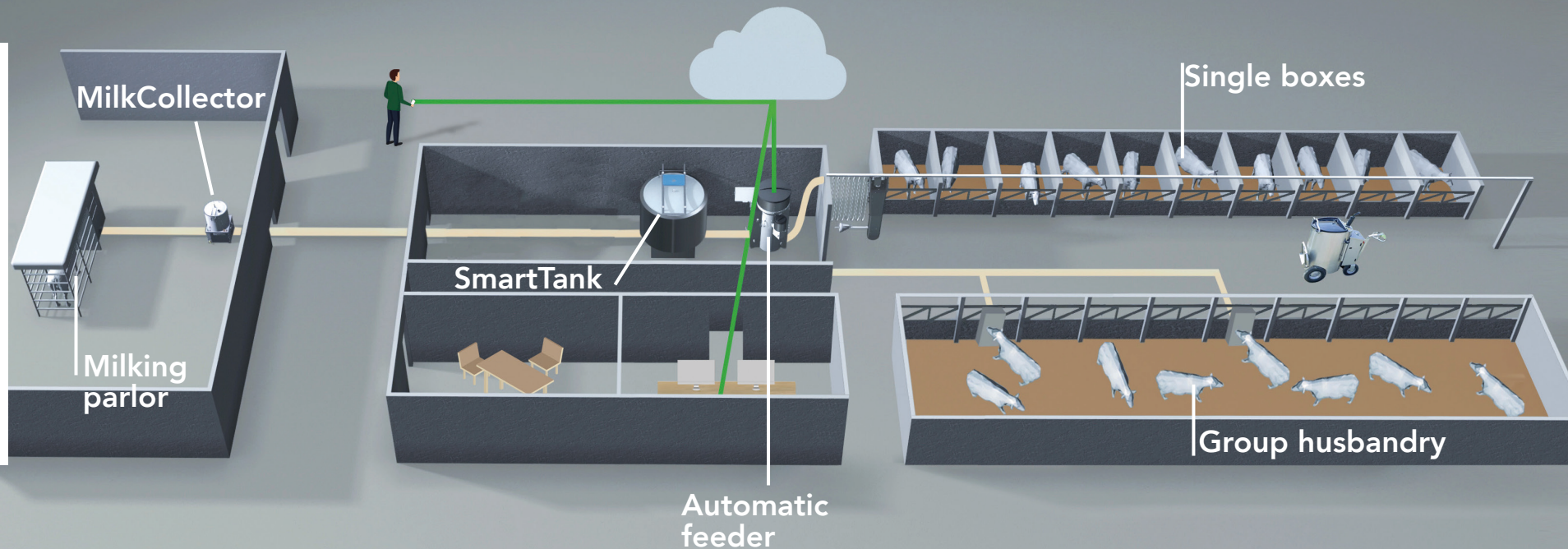
Fresh milk is still the best food for calves. But the associated extra workload has often been too high. For 100 l of calf milk per day, about 36.5 tons have to be moved per year and containers cleaned accordingly. Or the fresh milk offered is not consumed quickly enough and goes bad. The Automatic Milk Management from Förster-Technik provides the right solution to solve these problems. Select the required components and animal welfare and efficiency come back into harmony.

Video



A CONTINUOUS SYSTEM

The milk for the calves is automatically transported from the milking robot or milking parlor to the calf barn. There it is stored in cooled condition and retrieved, heated and fed in portions as needed. This not only saves strenuous physical labor, but also ensures milk quality in the long term. The AMM can be ideally integrated into any farm, as each component can also be used individually.



MILKCOLLECTOR. COLLECTING AND TRANSPORTING FRESH MILK.

The MilkCollector stands by the milking parlor or milking robot. It collects the calf milk after each milking and immediately transports it up to 100 meters to the SmartTank in the calf barn. The line is then rinsed with clear water and blown dry with compressed air.

SMARTTANK. COOLING AND AUTOMATIC CLEANING.

The SmartTank is available with 100 l and 300 l capacity. It is located in the calf barn near the automatic feeder. Its cooling unit provides hygienic intermediate storage of milk at 4-6°C, ensuring the highest quality of milk until it is consumed by the animals. The Smart-Tank is integrated into the automatic cleaning system of the automatic feeder – here there are already the rinsing pumps, pumps and heating. Offer your calves hygienically perfect milk – automatically and smart.

THE AUTOMATIC FEEDER. READY FOR THE BEST FRESH MILK.

The Combi version of the VARIO automatic feeder has a stainless steel heat exchanger with a heating capacity of up to 5 kW, which has proven itself thousands of times over. This makes it easy to heat even chilled milk to drinking temperature for the calves at drinking speed. And it includes the components and control system to clean the SmartTank as well. Efficiency at its best.





BECAUSE EACH CALF COUNTS.

**FÖRSTER
TECHNIK®**
www.foerster-technik.com



107310 Product Catalogue (10/2024)